

Bingo!

We will describe a series of brain-related key terms.

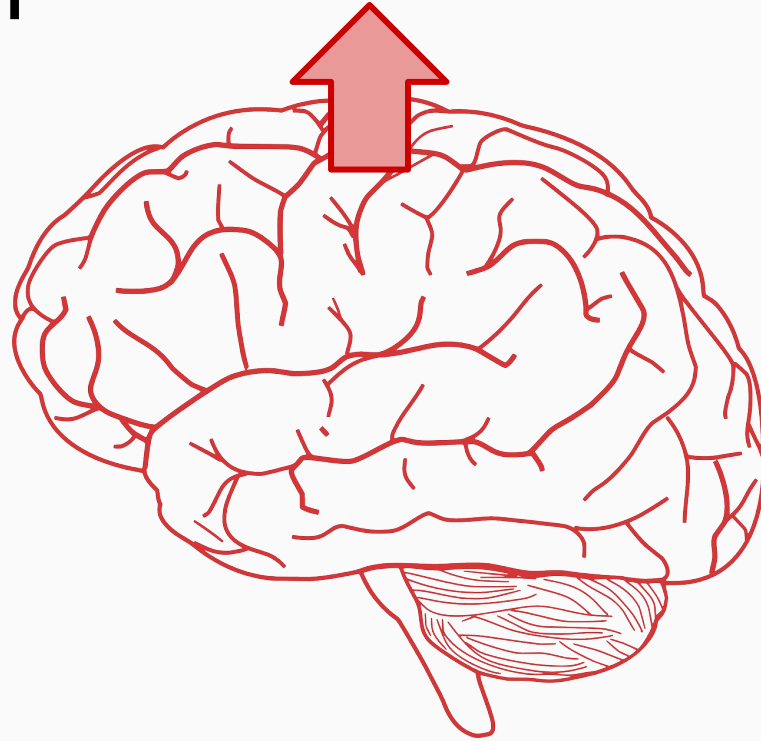
Your group must figure out what term we're referring to, and mark your Jamboard bingo card accordingly.

Call "bingo" when you get 4 in a line!

Be careful--the bingo cards do not all have the same key terms on them.

The structure
connecting the two
halves of the brain

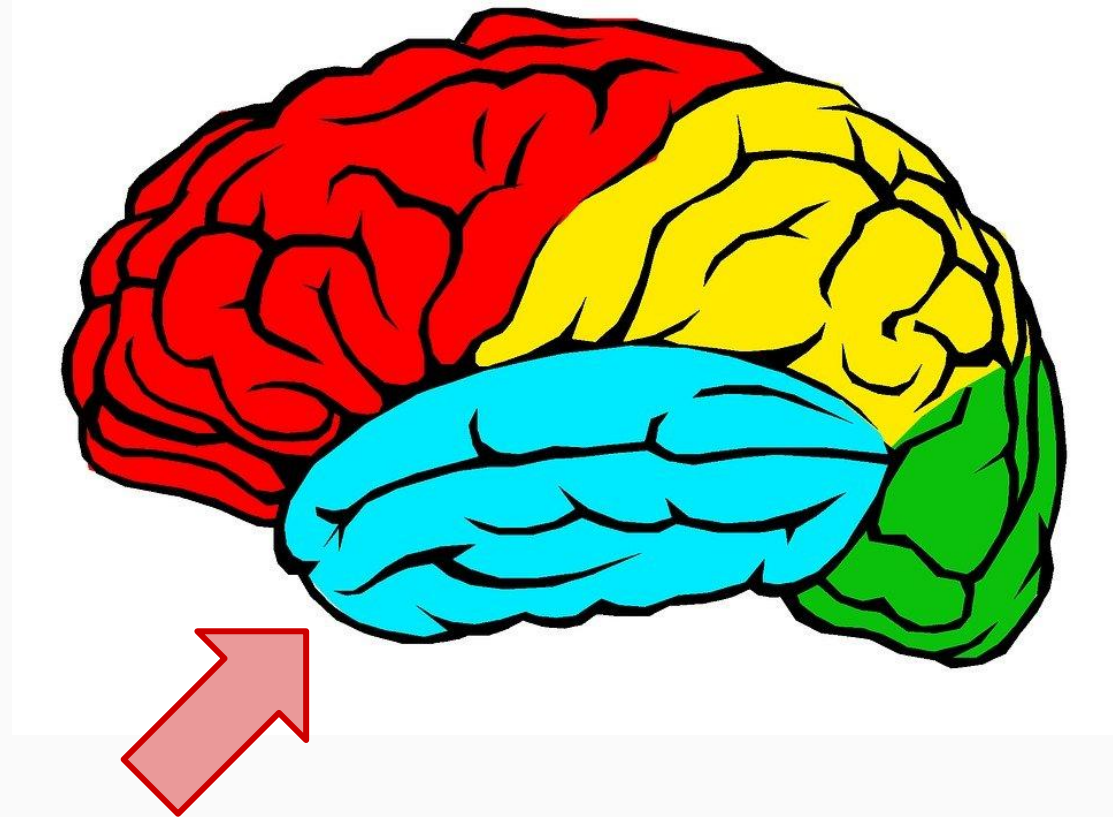
This direction



The membranes that
serve as a protective
“bag” for the brain

A synonym for cerebral
cortex

This lobe of the
cerebrum



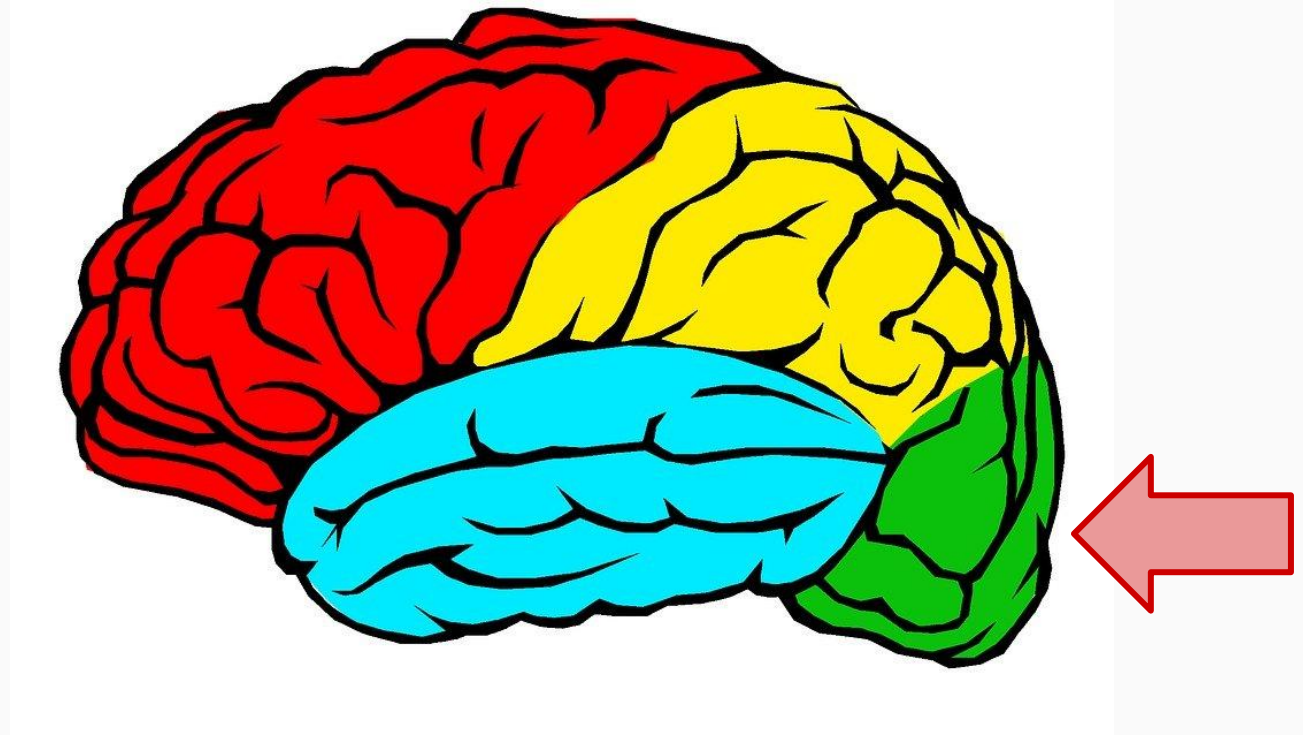
The subcortical region
that helps store and
retrieve new memories

This brain slice
orientation



A half (left or right)
of the brain

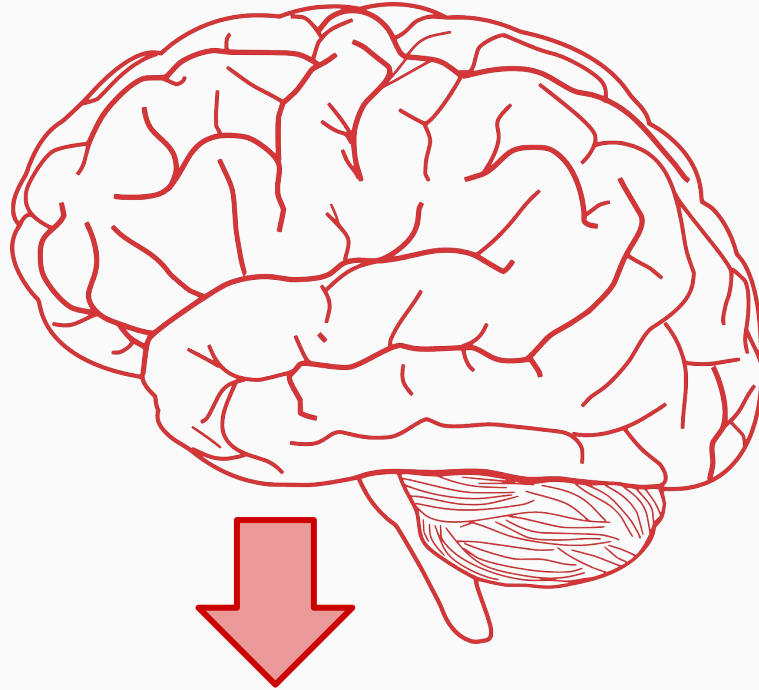
This lobe of the
cerebrum



The region that connects
the cerebrum to the spinal
cord

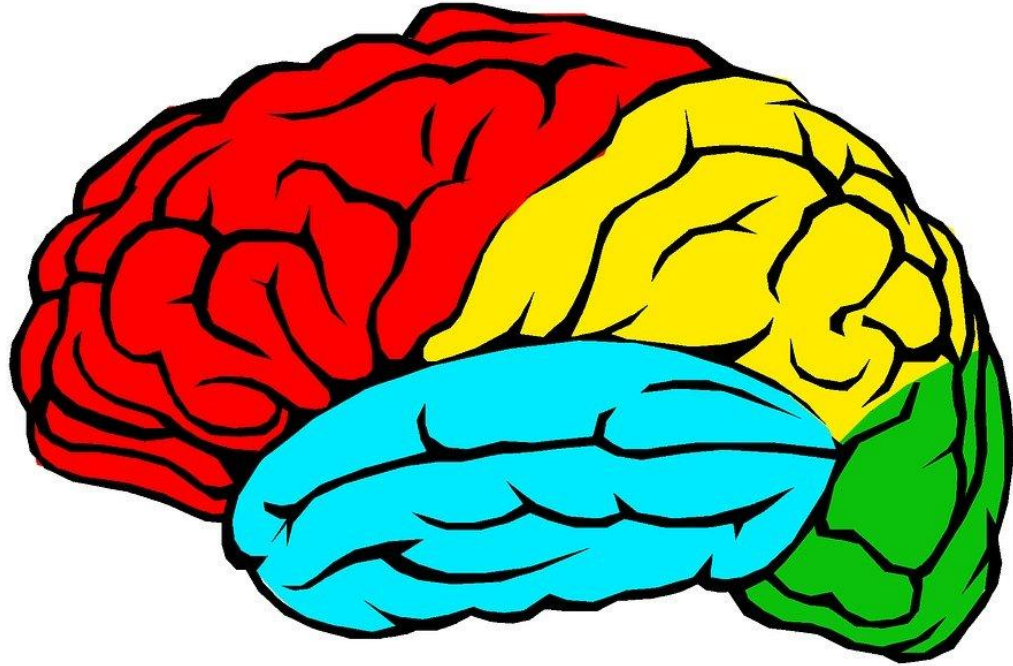
The subcortical region
that detects surprising
and fearful things

This direction



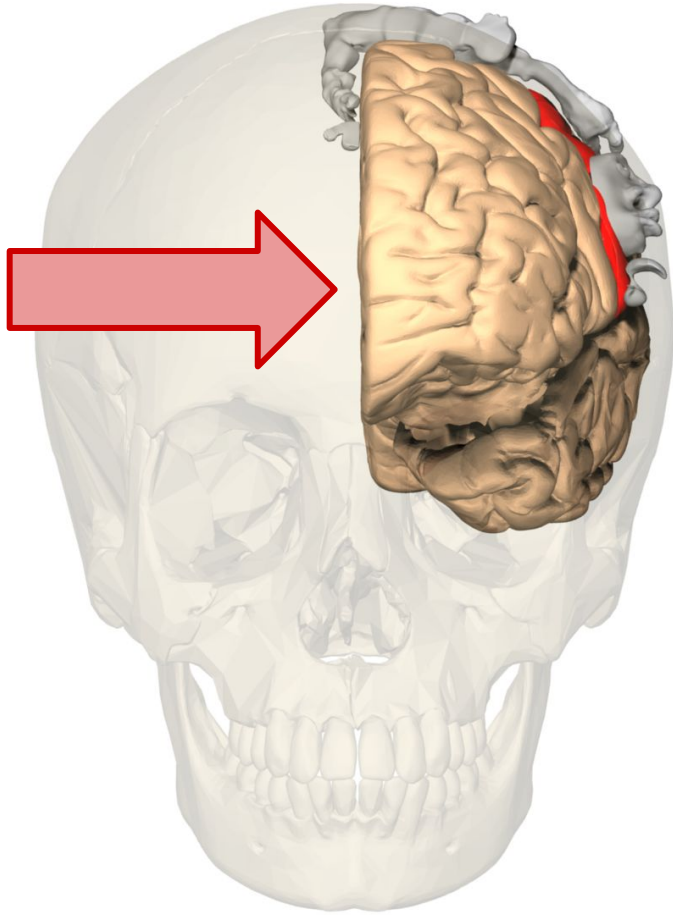
The “helper cells” that
outnumber neurons 10 to
1 in the brain

This lobe of the
cerebrum



A “valley” on the
brain’s surface

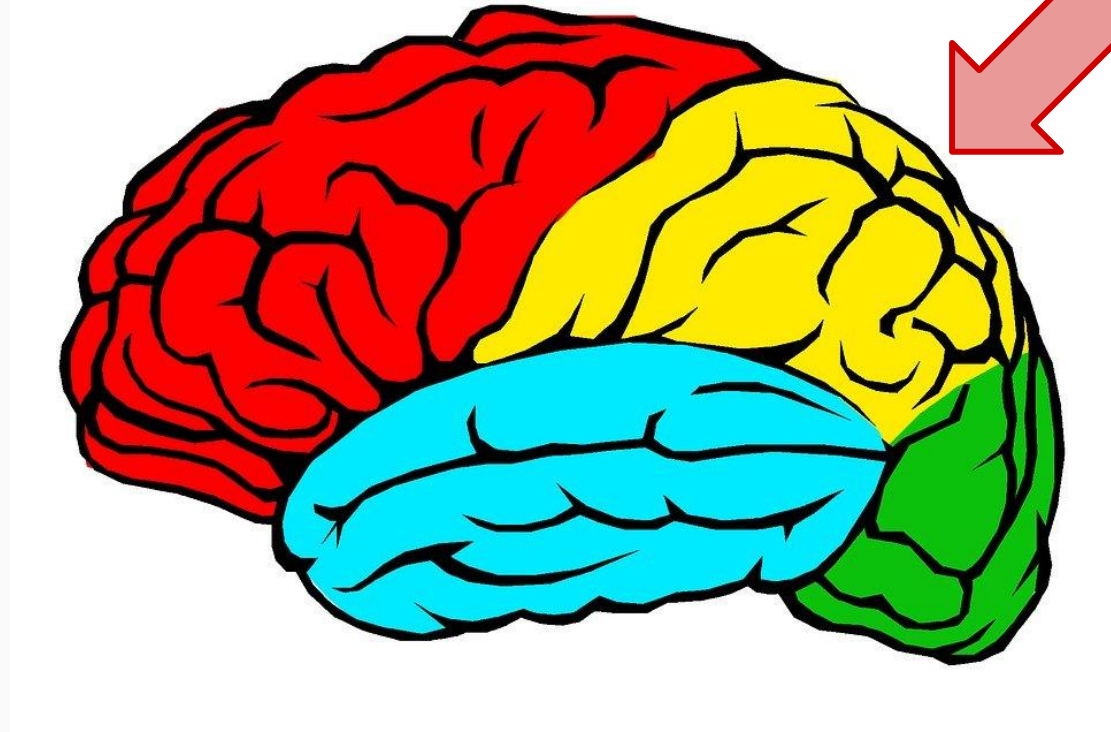
This side of
the brain



This brain slice
orientation



This lobe of the
cerebrum



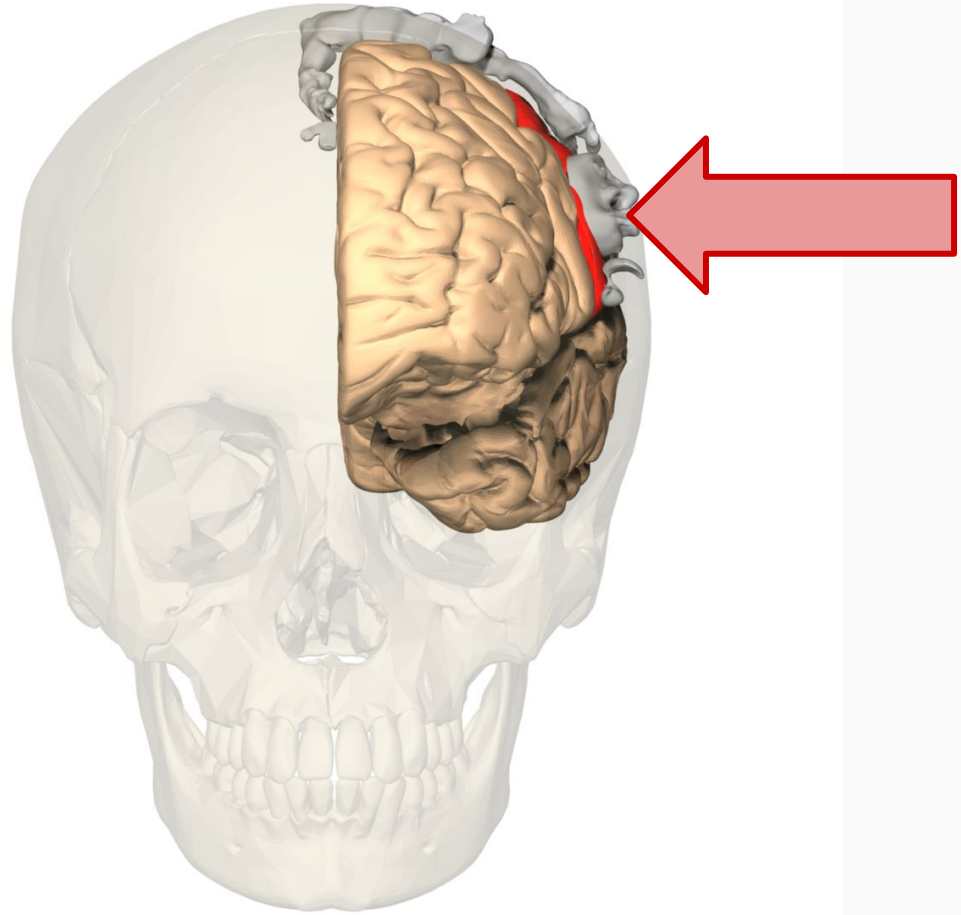
The subcortical region
that regulates body
temperature, hunger, and
more

This brain slice
orientation



A “hill” on the brain’s
surface

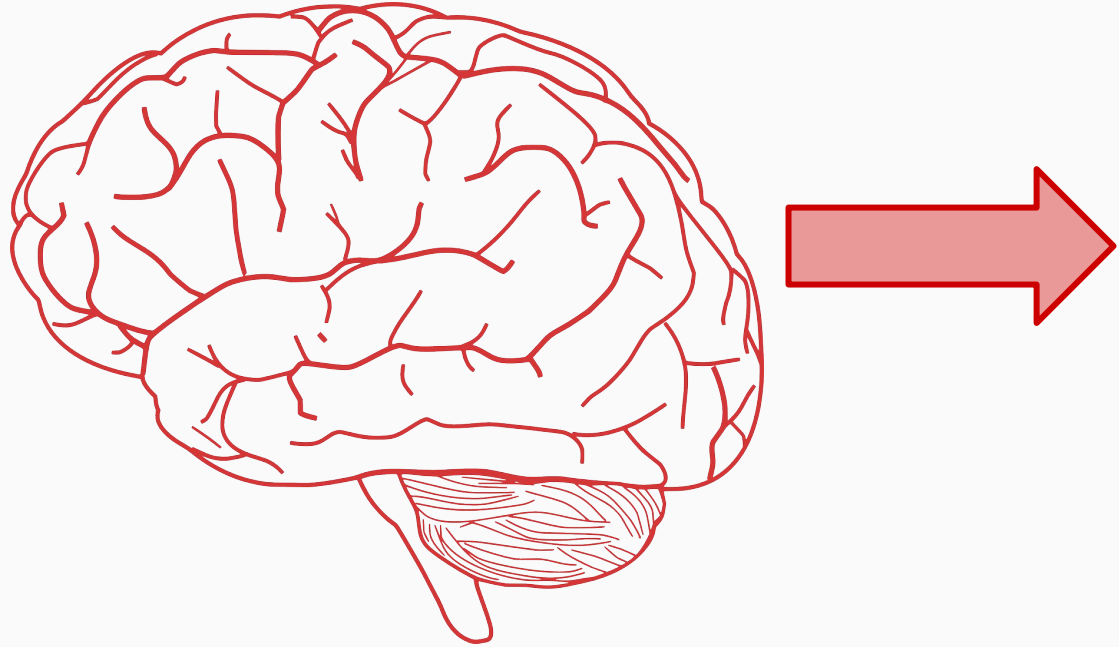
This side of
the brain



The subcortical region
that relays information
from sensory organs to
the cerebral cortex

The “small brain” region
that contributes to
physical coordination

This direction



The subcortical region
that forms motor habits

This direction

